

# MC51

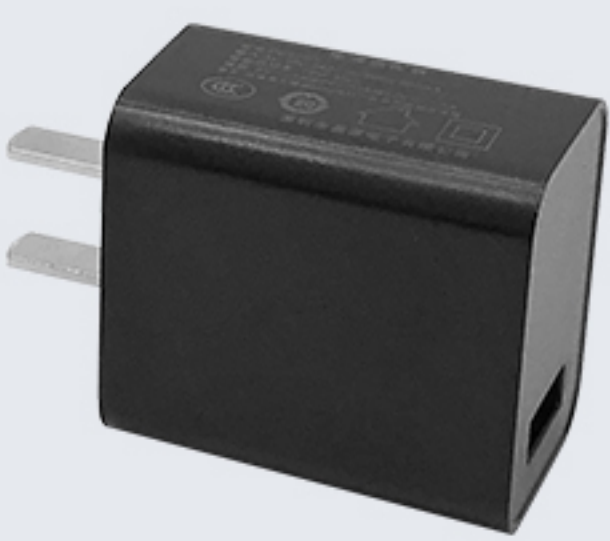
Mobile Computer

## Accessories Guide

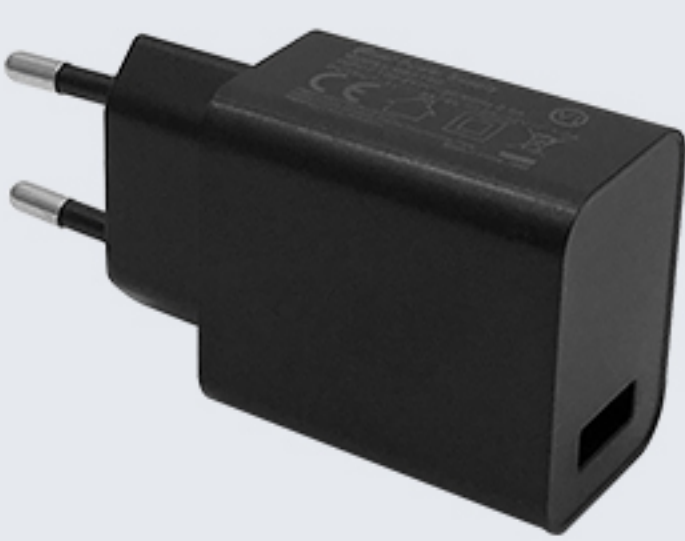


### Standard

#### Adapters



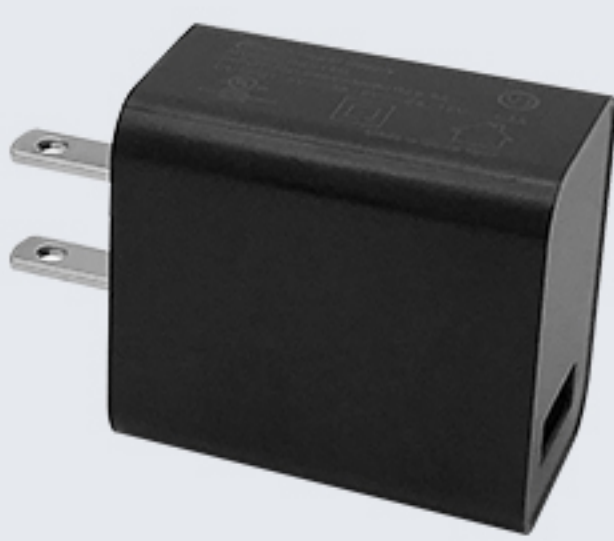
PWR-18W-CN



PWR-18W-EU



PWR-18W-UK



PWR-18W-US

Adapter (CN/EU/UK/US), I/P: 100-240V, O/P: 5V3A/12V1.5A/9V2A, use with DC-BK-TypeC cable.

#### USB Cable



**DC-BK-TypeC**  
1.0 meter Type-C cable.

#### Battery



**BTRY-C51-50MA**  
Main battery, 5000mAh Li-on battery, Rated Voltage: 3.85V.

### Optional

#### Charging Cradles



**CRD-C50-RBC**  
Single Charging Cradle, DC port, charge device only, use with DCPWR-12V2A-XX adapter.



**CRD-C50-SCC**  
Single Charging Cradle, Type-C port, charge device only, use with 10W/18W adapter.



**CRD-C51-MBC**  
Charging Cradle for main battery, up to 4 slots, use with DCPWR-12V2A-XX adapter.



**CRD-C51-DBC**  
Single Charging Cradle, Type-C port, charge MC50 device with spare battery. use with PWR-18W-XX adapter.



**CRD-C50-DP**  
Charging Cradle for device, include the cradle cup(CRD-C50-INS),support device with UHF pistol grip or only device, use with DCPWR-12V2A-XX adapter. The cradle cup has an insert that must be removed prior to inserting the MC50 with UHF pistol.

#### Pistol Grip



**RB-C50-PS**  
Snap-On Trigger Handle and Rugged Boot Kit without battery.

#### Hand Strap



**RB-C51-HS**  
Hand Strap with buckle This include 2 pcs screws,1 pcs wrist strap Buckle and 1 pcs hand strap.

#### Rugged Rubber Boot



**RB-C50-RR**  
RB-C50-RR does not support charging cradle.

#### Pistol Battery



**BYT-C50-PB**  
Pistol Battery for UHF Back Clip, 5200 mAh

#### Screen Protector



**SP-C50**  
Tempered glass screen protector.

#### Adapters



**DCPWR-12V2A-CN/UK/EU/US**  
Adapter (CN/EU/UK/US), I/P:100-240V, Pistol O/P:12V2A, DC